

# Discover **AirAdvanced<sup>®</sup> Map**

SUEZ – Evolution of Aria Technologies software

Speaker : Sirine HAMDANA, product expert



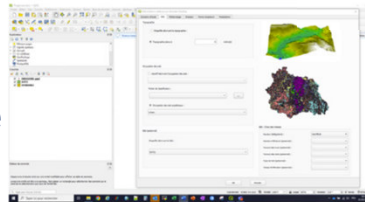
- Introducing AirAdvanced@Map

# What is AirAdvanced® Map?

## AirAdvanced® Map

QGIS

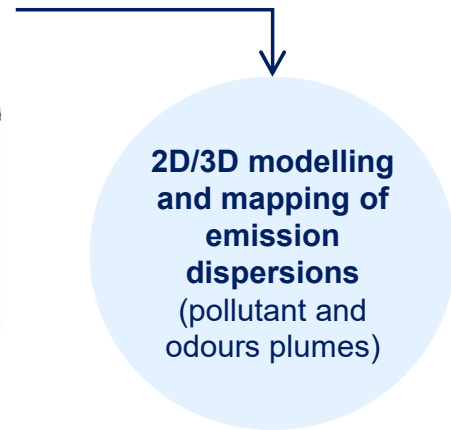
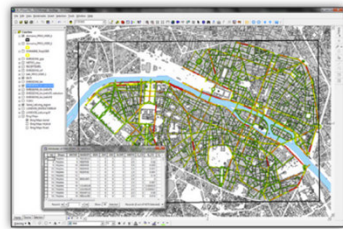
Site



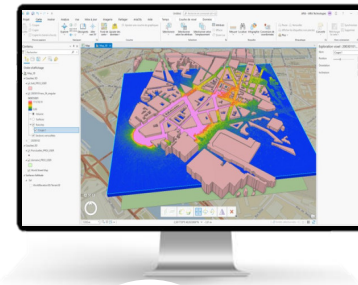
Weather



Emissions



Odours



Public Health

GHG



Road Traffic



Residential



Industry

# Why a new product?



## AirAdvanced® Map



Replace **four** products in the portfolio.

Based on advent of new libraries  
**easy to maintain**



Inspired by positive customer feedback to enhance user experience

**35 years** of expertise in atmospheric dispersion, **hundreds** of licenses sold, and **66 clients** under maintenance including the City of Paris; INERIS, Arcelor Mittal...



1. Software made **by modelling experts** for modeler
2. Provided international references **and** state-of-the-art models
3. Module integrated into **customer work environments**

- Introducing AirAdvanced@Map

# An integrated extension to your GIS

AirAdvanced® Map



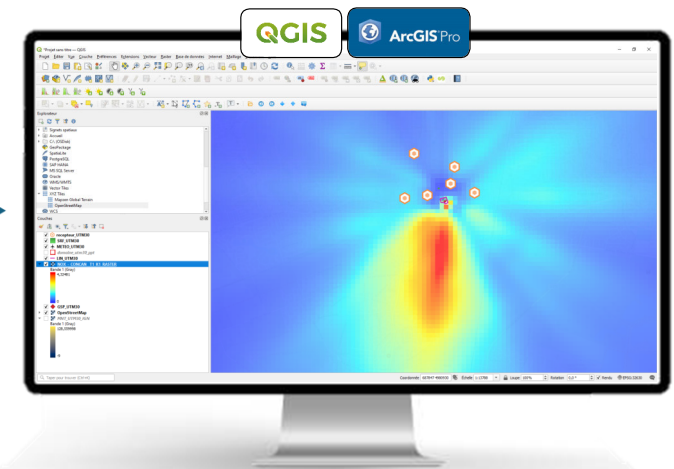
Preparing data  
in your GIS



AirAdvanced® Map



Parameter setting,  
calculation, export  
with the AirAdvanced®Map  
extension for your GIS



Data post-processing  
in your GIS

- Concentrations (horizontal section)
- Ground-level deposition
- Concentrations in percentiles
- Frequency of exceedance

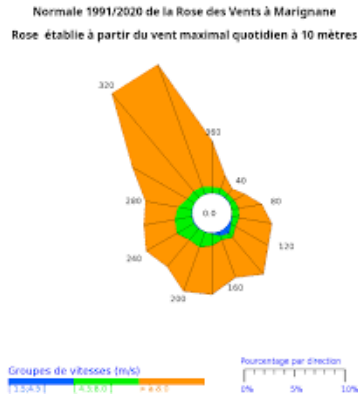
11/04/2025

Discover AirAdvanced®Map

- Introducing AirAdvanced@Map

# A wide range of meteorological inputs

**WIND ROSE**  
FREQUENCY  
AIM



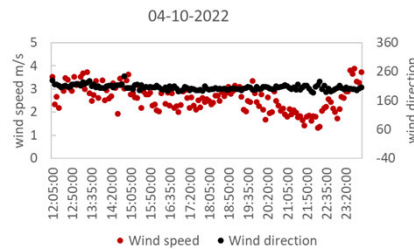
**ACADEMIC**  
USER-DEFINED  
AIM / PMSS

Base de données météorologiques académique

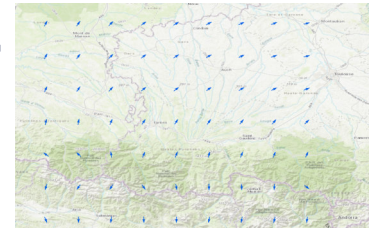
Nom de la station: STATION1 Valeur: 10 m

Date	Vitesse (m/s)	Direction (deg)	Température (°C)	Pluie (mm)	Pluie (mm)
01-01-2003 20:10:00	3	222	11	5	4

**MET STATION TIME SERIES**  
SEQUENTIAL  
AIM / PMSS



**MESO SCALE MODEL**  
WRF, AROME, ...  
PMSS



- Introducing AirAdvanced@Map

# Significant progress



## 1 GUI

*for pre- and post-processing, calculations*



## 2 Models

*dispersion in a single software package*



## Trefic

*Integrated*



## The power of GIS

*for symbology, background maps*



## Availability under QGIS and ARCGIS PRO

*version tracking*

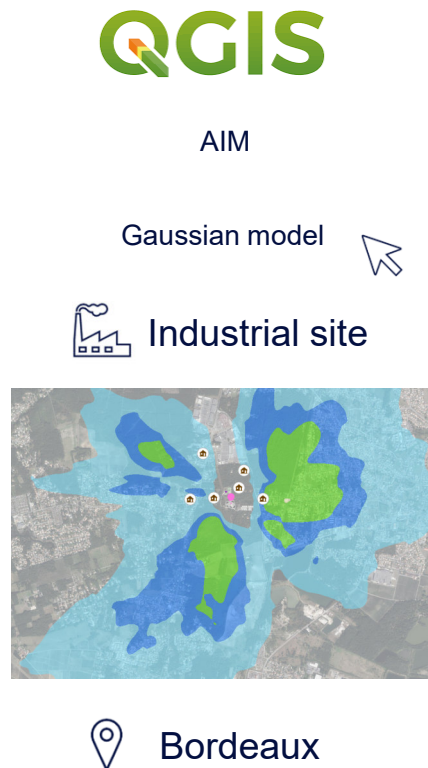


## Integrated 3D analysis

*directly in ARCGIS PRO or with PARAVIEW*

- Live demonstrations

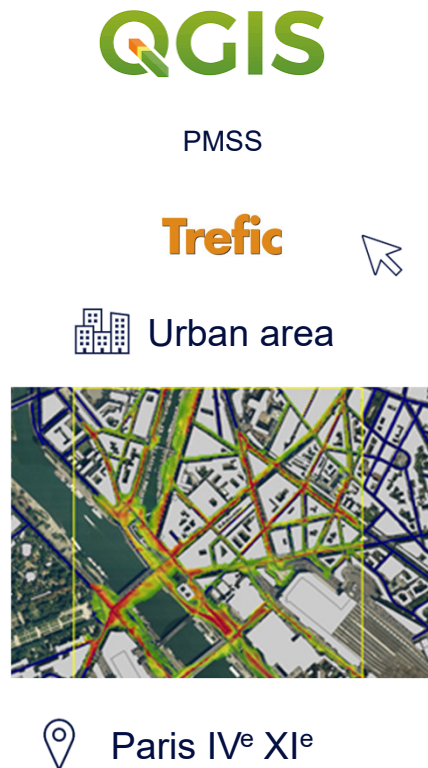
# Case 1: ICPE regulatory study



- 2 point sources (chimneys) emitting **NO<sub>x</sub>** and **PM<sub>10</sub>**
- 2 surface sources (settling tanks) emitting **odours**
- Line sources (lorry traffic) emitting **NO<sub>x</sub>** and **PM<sub>10</sub>**
- Taking **topography** into account
- **Meteorological data** from one station **over 1 year** taken into account

- Live demonstrations

## Case 2: Air & Health urban development study



- Line sources with **Average Daily Traffic (ADT)**
- 1 point source: generator on Quai de l'Arsenal
- 1 point source: chimney on the roof of the Opéra Bastille
- Flat land assumption
- Academic weather situation: user-defined

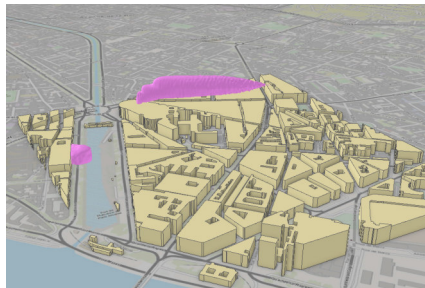


- Live demonstrations

## Case 3: ICPE study in an urban area - 3D visualisation



PMSS



Paris IV<sup>e</sup> XI<sup>e</sup>

- 1 point source: generator on Quai de l'Arsenal
- 1 point source: chimney on the roof of the Opéra Bastille
- Flat land assumption
- Weather data from one station
- Modelling / 3D visualisation  
**PARAVIEW and ARCGIS PRO**

# THANK YOU

## Commercial offer & Technical support request

<https://forms.office.com/pages/responsepage.aspx?id=Zyih9C2SnUu7hZ7niYUSoKjHgAoJa2JPoiiR1fLkxBNUMkZaVVZIQ0Q3STdZTDBTN0Y1M0NGSkU0Ry4u&route=shorturl>



[suez.com](https://suez.com)

